

# IPligence and Microsoft SQL how-to guide

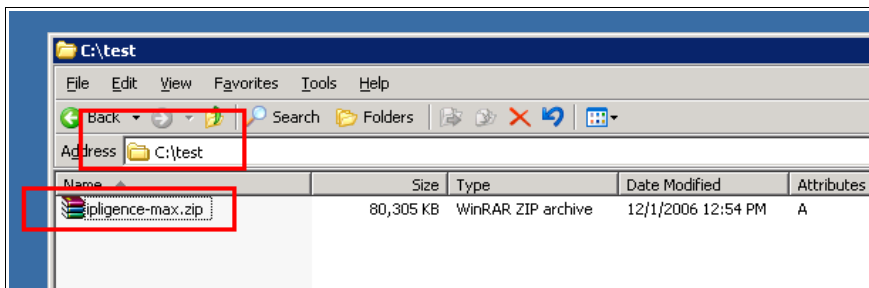
\*\*IPligence assumes no liability whatsoever for any loss, damage or destruction caused by the use of the information and instructions obtained from this guide.

This guide illustrates a method to load IPligence's database CSV format in a Microsoft SQL 2000 database. Prior proceeding please make sure you have all the following:

- ✓ ZIP file unpacker
- ✓ Microsoft SQL 2000 fully running and operable
- ✓ Enough user rights to create tables inside the database

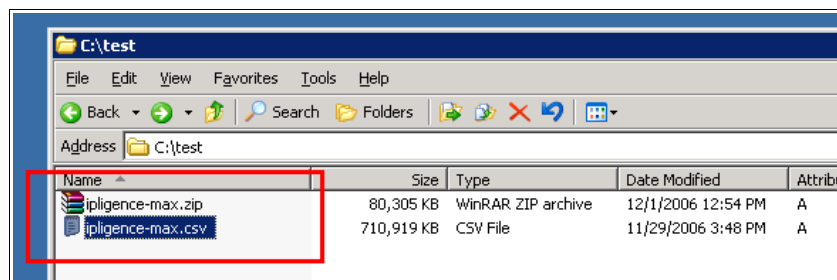
## Step 1

Choose a folder where to save your IPligence product.



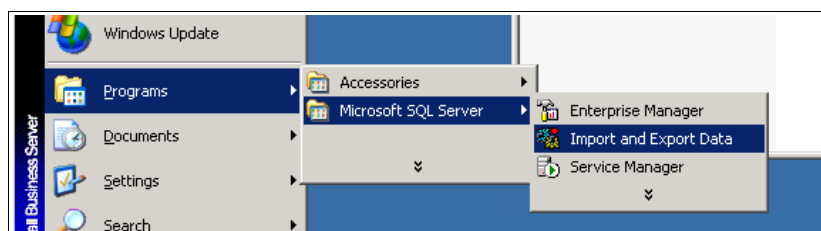
## Step 2

Extract the .csv file from inside the ZIP file containing your IPligence product.



## Step 3

Open the "Import and Export Data" application from your Microsoft SQL 2000 folder.



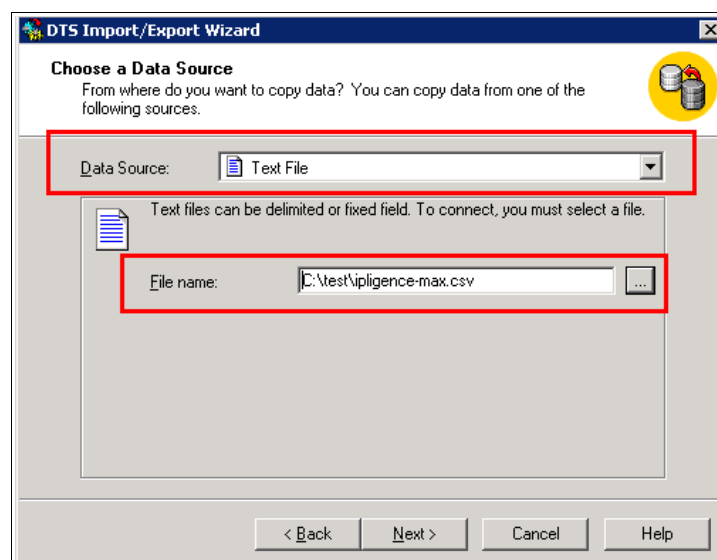
## Step 4

Press Next.



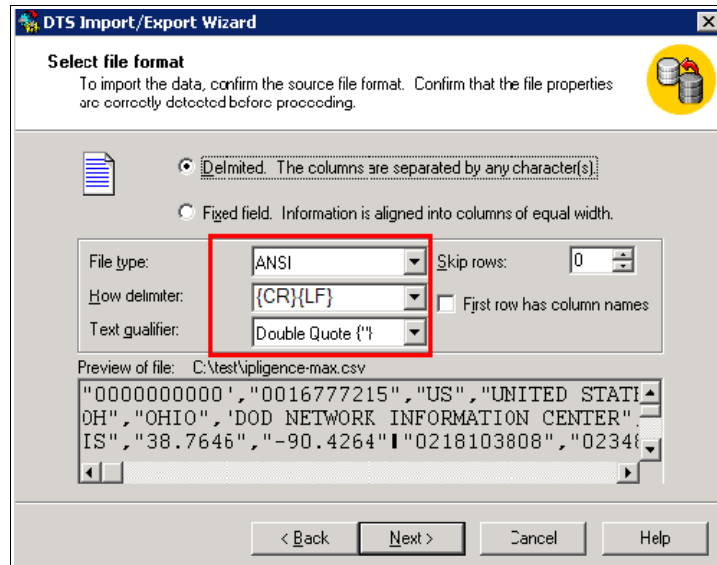
## Step 5

Select "Text File" as Data Source, and your IPLigence product file name and location. Press Next.



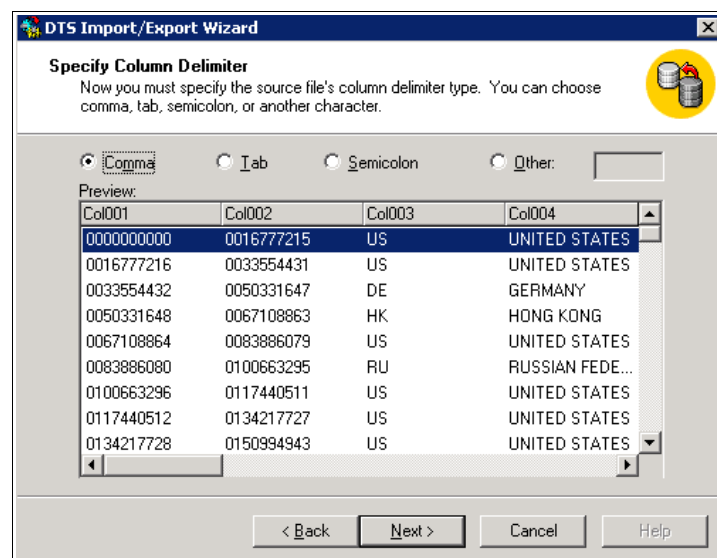
## Step 6

Be sure the options "File Type", "Row delimiter" and "Text qualifier" are set as shown in the image bellow. Press Next.



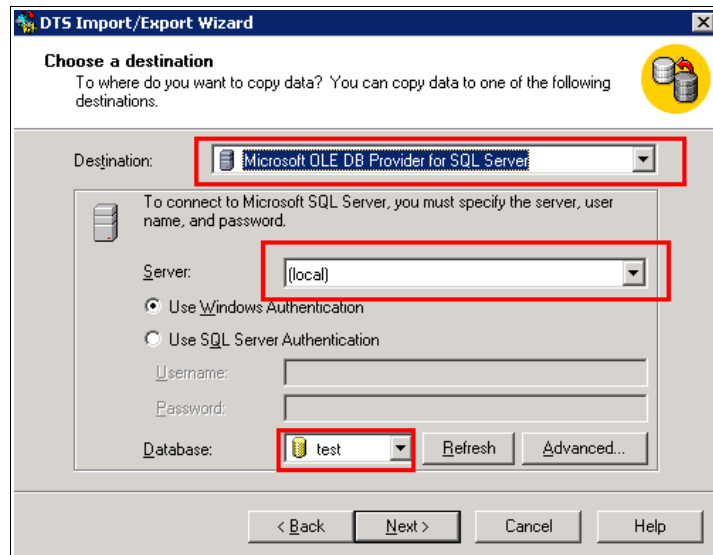
## Step 7

Information should appear ordered by columns in a way similar as it does in the image bellow, nothing else to do here. Press Next.



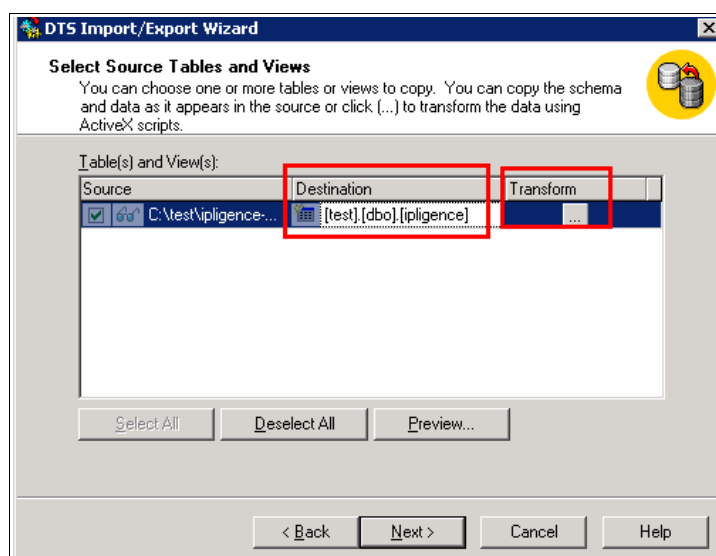
## Step 8

Select your appropriate destination driver as shown below, your database server string and the database where to insert the contents, for this example we have used the default database called "test", also only if required by your installation insert the necessary login and password . Press Next.



## Step 9

Modify the destination table so it reads "[test].[dbo].[ipligence]" or any database or table name you may want to use. After you are done, click on the Transform icon.

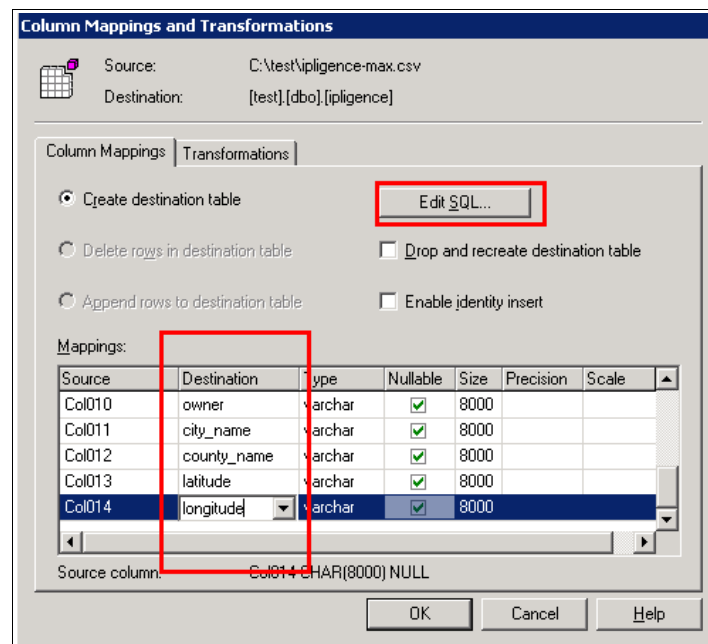


## Step 10

Now, this is probably the most important part of the process, please be extra careful and double check everything you do. Rename each item on the Destination column (Mappings section) so it reads from the first one to the last one like the following list:

```
ip_from
ip_to
country_code
country_name
continent_code
continent_name
time_zone
region_code
region_name
owner
city_name
county_name
latitude
longitude
```

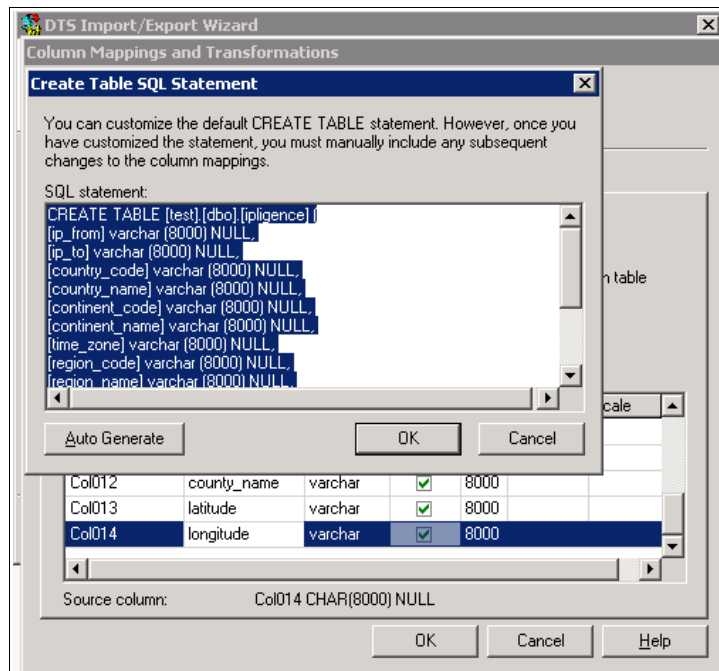
Every row must be renamed exactly as above, otherwise the import process will fail and you will have to start the whole process again.



Once you have done all destination columns (Col001 to Col014) click on the "Edit SQL..." button above.

## Step 11

Remove all the text shown in the new window.



## Step 12

Copy paste the following SQL code (only if your product is IPligence MAX, if not please check <http://www.ipligence.com/en/faq/> to find out the code required for your product version).

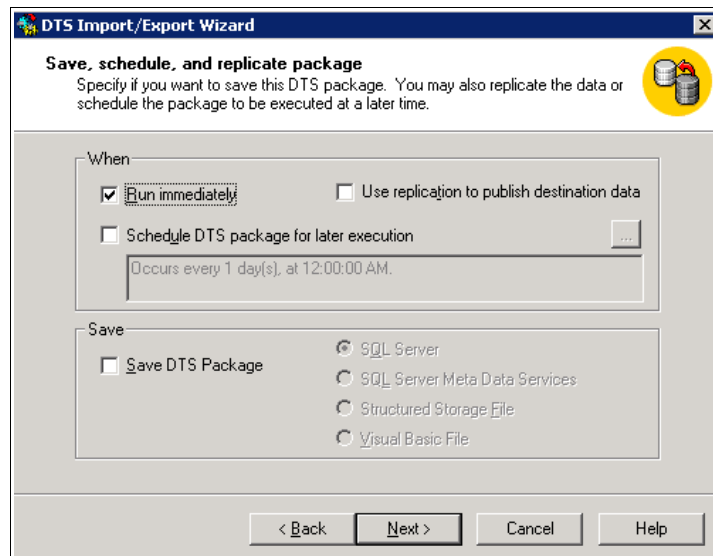
```
CREATE TABLE [dbo].[ipligence]
(
[ip_from] NUMERIC(11) NOT NULL,
[ip_to] NUMERIC(11) NOT NULL,
[country_code] NVARCHAR(10) NOT NULL,
[country_name] NVARCHAR(255) NOT NULL,
[continent_code] NVARCHAR(10) NOT NULL,
[continent_name] NVARCHAR(255) NOT NULL,
[time_zone] NVARCHAR(10) NOT NULL,
[region_code] NVARCHAR(10) NOT NULL,
[region_name] NVARCHAR(255) NOT NULL,
[owner] NVARCHAR(255) NOT NULL,
[city_name] NVARCHAR(255) NOT NULL,
[county_name] NVARCHAR(255) NOT NULL,
[latitude] FLOAT NOT NULL,
[longitude] FLOAT NOT NULL
);
```

Make sure the line that reads "CREATE TABLE [dbo].[ipligence]" matches your prior table selection (step 9), if not, rename the [ipligence] sentence to the name of your table.

After you paste the code shown above, press OK to close the window, press OK again in the remaining window. Finally press Next.

## Step 13

Press Next.



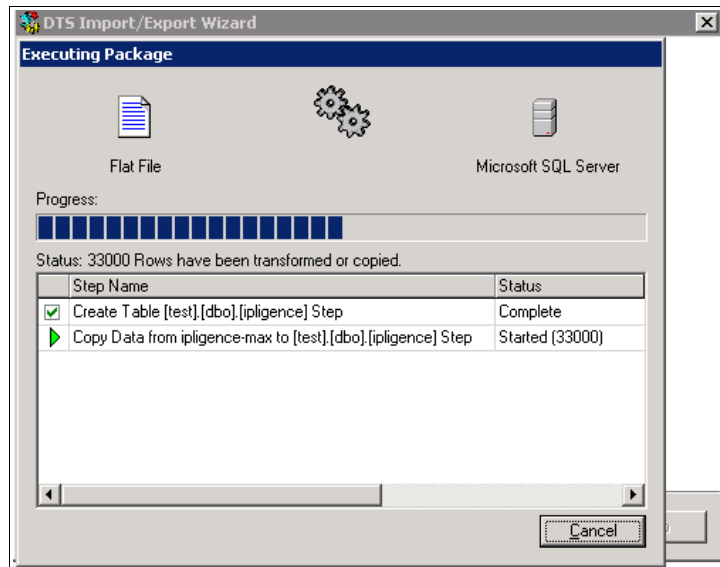
## Step 14

If you are ready to import the data, Press Next.

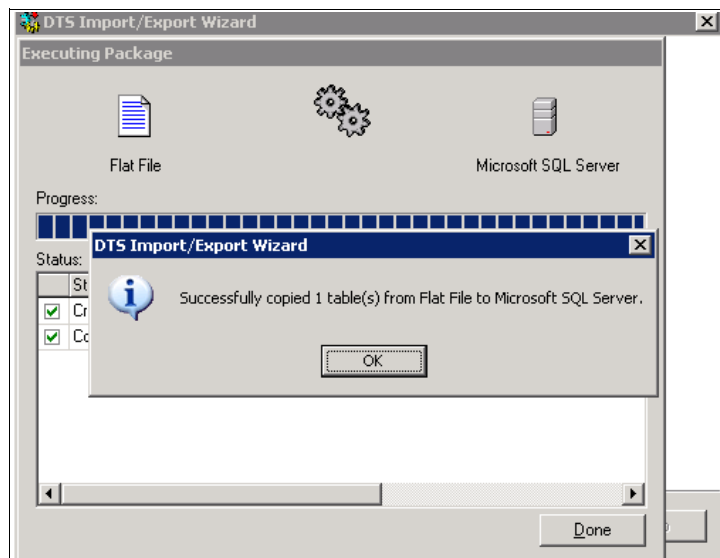


## Step 15

If everything goes well and there are not mistakes in any of the previous steps, the import process should start running. Please allow the necessary time for the import process to finish.



After the process finishes successfully you should read something like this.



**Congratulations**, you have successfully deployed IPligence inside your database.

You can find an electronic copy of this document at the following address:  
<http://www.ipligence.com/>