

# IPligence and Microsoft SQL 2005 how-to guide

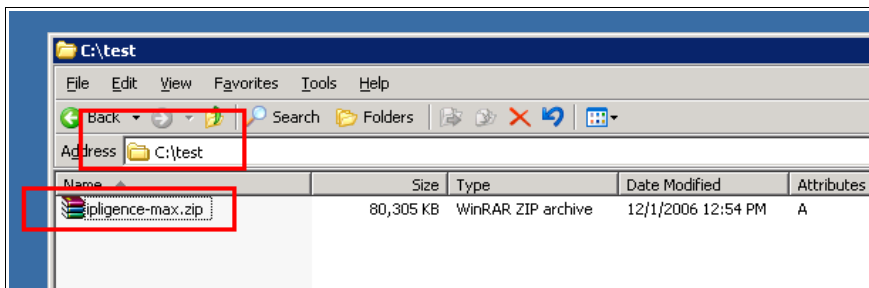
\*\*IPligence assumes no liability whatsoever for any loss, damage or destruction caused by the use of the information and instructions obtained from this guide.

This guide illustrates a method to load IPligence's database CSV format in a Microsoft SQL 2005 database. Prior proceeding please make sure you have all the following:

- ✓ ZIP file unpacker
- ✓ Microsoft SQL 2005 SP1 fully running and operable
- ✓ Enough user rights to create tables inside the database

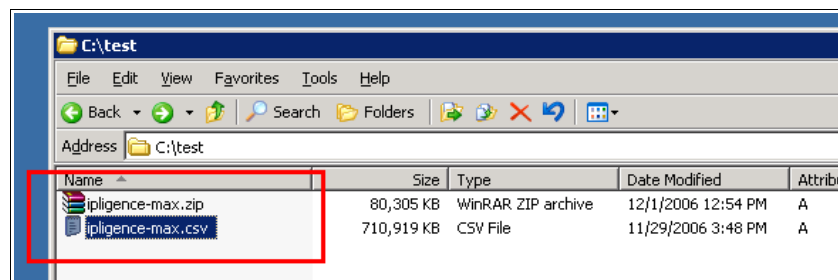
## Step 1

Choose a folder where to save your IPligence product.



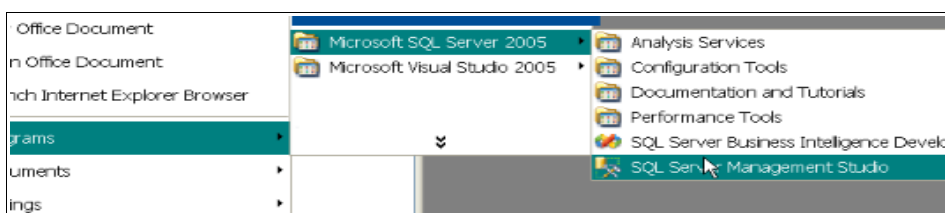
## Step 2

Extract the .csv file from inside the ZIP file containing your IPligence product.



## Step 3

Open the "Management Studio" application from your Microsoft SQL 2005 suite.



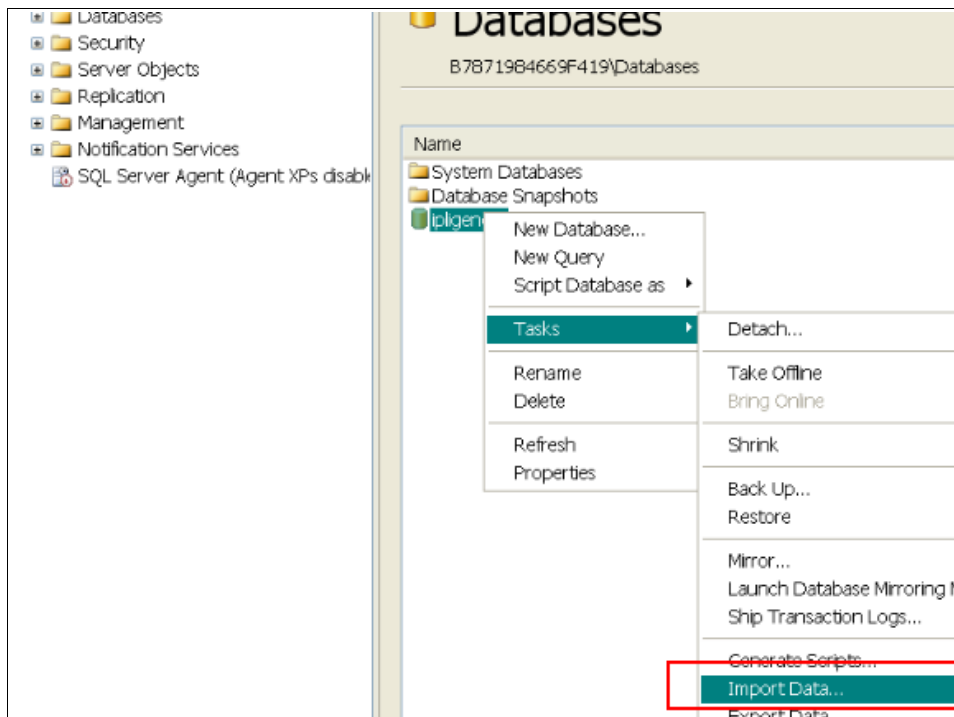
## Step 4

Connect to your database server.



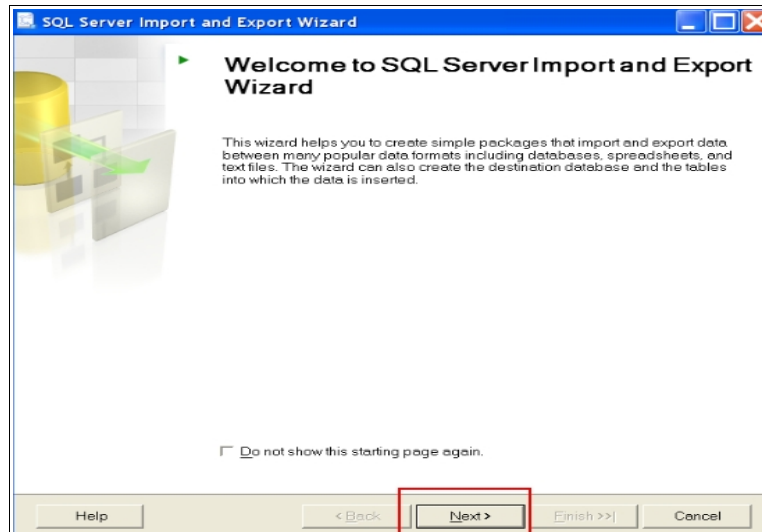
## Step 6

Right click over your existing database where you want to import your Ipligence database and click on "Import Data".



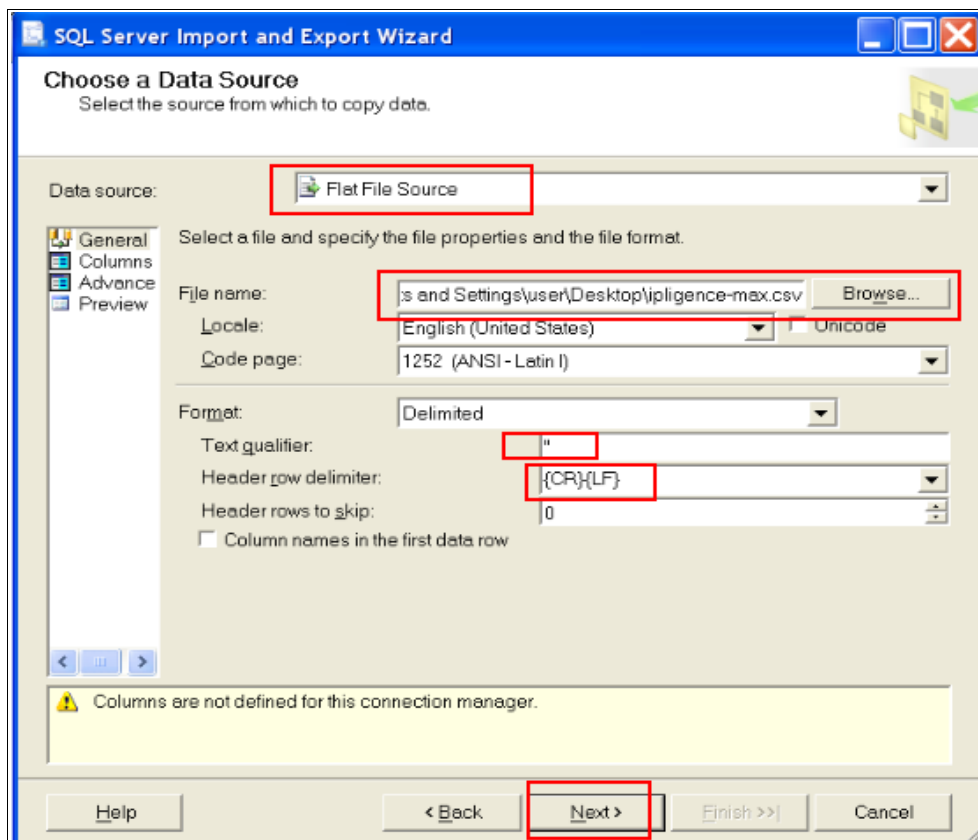
## Step 6

Click next.



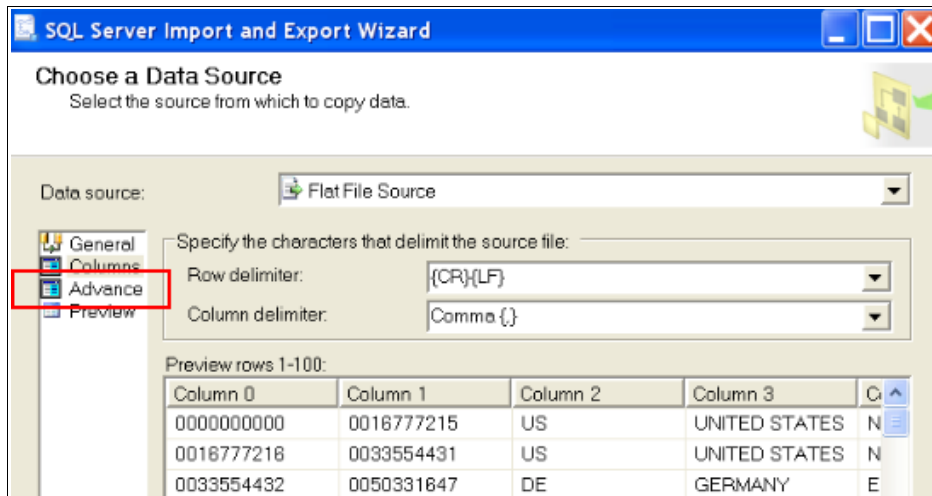
## Step 7

Select "Flat File Source" as the data source, click on "Browse" and locate your .csv Ipligence Max database file, use (double quote) " as the text qualifier and {CR}{LF} as the "Header row delimiter", once done as shown below click "Next".



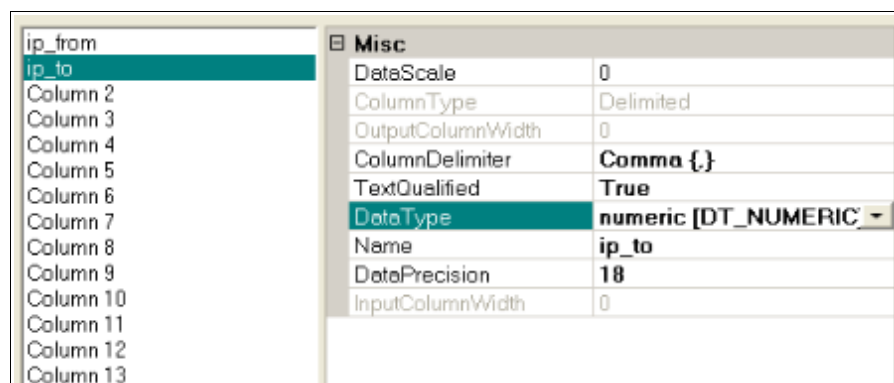
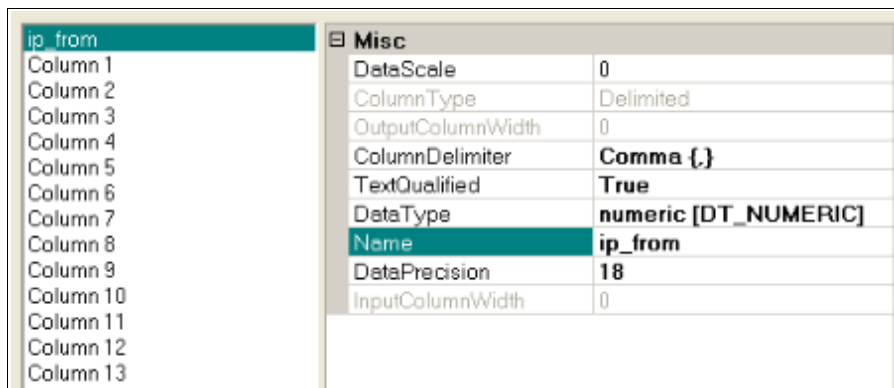
## Step 8

Click on Advance.



## Step 9

Configure each column as shown in the images below:



ip_from
ip_to
country_code
Column 3
Column 4
Column 5
Column 6
Column 7
Column 8
Column 9
Column 10
Column 11
Column 12
Column 13

<b>Misc</b>	
DataScale	0
ColumnType	Delimited
OutputColumnWidth	10
ColumnDelimiter	Comma {,}
TextQualified	True
DataType	string [DT_STR]
Name	country_code
DataPrecision	0
InputColumnWidth	0

ip_from
ip_to
country_code
country_name
Column 4
Column 5
Column 6
Column 7
Column 8
Column 9
Column 10
Column 11
Column 12
Column 13

<b>Misc</b>	
DataScale	0
ColumnType	Delimited
OutputColumnWidth	255
ColumnDelimiter	Comma {,}
TextQualified	True
DataType	string [DT_STR]
Name	country_name
DataPrecision	0
InputColumnWidth	0

ip_from
ip_to
country_code
country_name
continent_code
Column 5
Column 6
Column 7
Column 8
Column 9
Column 10
Column 11
Column 12
Column 13

<b>Misc</b>	
DataScale	0
ColumnType	Delimited
OutputColumnWidth	10
ColumnDelimiter	Comma {,}
TextQualified	True
DataType	string [DT_STR]
Name	continent_code
DataPrecision	0
InputColumnWidth	0

ip_from
ip_to
country_code
country_name
continent_code
continent_name
Column 6
Column 7
Column 8
Column 9
Column 10
Column 11
Column 12
Column 13

<b>Misc</b>	
DataScale	0
ColumnType	Delimited
OutputColumnWidth	255
ColumnDelimiter	Comma {,}
TextQualified	True
DataType	string [DT_STR]
Name	continent_name
DataPrecision	0
InputColumnWidth	0

ip_from	
ip_to	
country_code	
country_name	
continent_code	
continent_name	
<b>time_zone</b>	
Column 7	
Column 8	
Column 9	
Column 10	
Column 11	
Column 12	
Column 13	

<b>Misc</b>	
DataScale	0
ColumnType	Delimited
OutputColumnWidth	<b>10</b>
ColumnDelimiter	<b>Comma {,}</b>
TextQualified	<b>True</b>
DataType	<b>string [DT_STR]</b>
<b>Name</b>	<b>time_zone</b>
DataPrecision	0
InputColumnWidth	0

ip_from	
ip_to	
country_code	
country_name	
continent_code	
continent_name	
time_zone	
<b>region_code</b>	
Column 8	
Column 9	
Column 10	
Column 11	
Column 12	
Column 13	

<b>Misc</b>	
DataScale	0
ColumnType	Delimited
OutputColumnWidth	<b>10</b>
ColumnDelimiter	<b>Comma {,}</b>
TextQualified	<b>True</b>
DataType	<b>string [DT_STR]</b>
<b>Name</b>	<b>region_code</b>
DataPrecision	0
InputColumnWidth	0

ip_from	
ip_to	
country_code	
country_name	
continent_code	
continent_name	
time_zone	
region_code	
<b>region_name</b>	
Column 9	
Column 10	
Column 11	
Column 12	
Column 13	

<b>Misc</b>	
DataScale	0
ColumnType	Delimited
OutputColumnWidth	<b>255</b>
ColumnDelimiter	<b>Comma {,}</b>
TextQualified	<b>True</b>
DataType	<b>string [DT_STR]</b>
<b>Name</b>	<b>region_name</b>
DataPrecision	0
InputColumnWidth	0

ip_from	
ip_to	
country_code	
country_name	
continent_code	
continent_name	
time_zone	
region_code	
region_name	
<b>owner</b>	
Column 10	
Column 11	
Column 12	
Column 13	

<b>Misc</b>	
DataScale	0
ColumnType	Delimited
OutputColumnWidth	<b>255</b>
ColumnDelimiter	<b>Comma {,}</b>
TextQualified	<b>True</b>
DataType	<b>string [DT_STR]</b>
<b>Name</b>	<b>owner</b>
DataPrecision	0
InputColumnWidth	0

ip_from	<b>Misc</b> DataScale 0 ColumnType Delimited OutputColumnWidth 255 ColumnDelimiter Comma {,} TextQualified True DataType string [DT_STR] <b>Name city_name</b> DataPrecision 0 InputColumnWidth 0
ip_to	
country_code	
country_name	
continent_code	
continent_name	
time_zone	
region_code	
region_name	
owner	
city_name	
Column 11	
Column 12	
Column 13	

ip_from	<b>Misc</b> DataScale 0 ColumnType Delimited OutputColumnWidth 255 ColumnDelimiter Comma {,} TextQualified True DataType string [DT_STR] <b>Name county_name</b> DataPrecision 0 InputColumnWidth 0
ip_to	
country_code	
country_name	
continent_code	
continent_name	
time_zone	
region_code	
region_name	
owner	
city_name	
county_name	
Column 12	
Column 13	

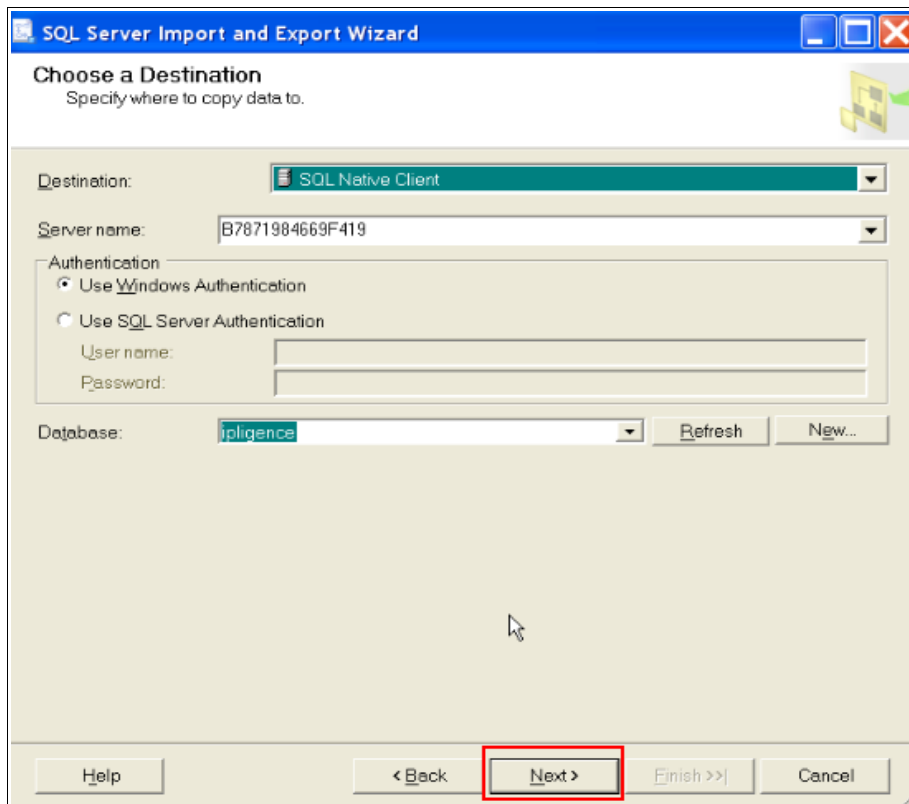
ip_from	<b>Misc</b> DataScale 0 ColumnType Delimited OutputColumnWidth 0 ColumnDelimiter Comma {,} TextQualified True <b>DataType float [DT_R4]</b> <b>Name latitude</b> DataPrecision 0 InputColumnWidth 0
ip_to	
country_code	
country_name	
continent_code	
continent_name	
time_zone	
region_code	
region_name	
owner	
city_name	
county_name	
latitude	
Column 13	

ip_from	<b>Misc</b> DataScale 0 ColumnType Delimited OutputColumnWidth 0 ColumnDelimiter {CR}{LF} TextQualified True <b>DataType float [DT_R4]</b> <b>Name longitude</b> DataPrecision 0 InputColumnWidth 0
ip_to	
country_code	
country_name	
continent_code	
continent_name	
time_zone	
region_code	
region_name	
owner	
city_name	
county_name	
latitude	
longitude	

Press Next.

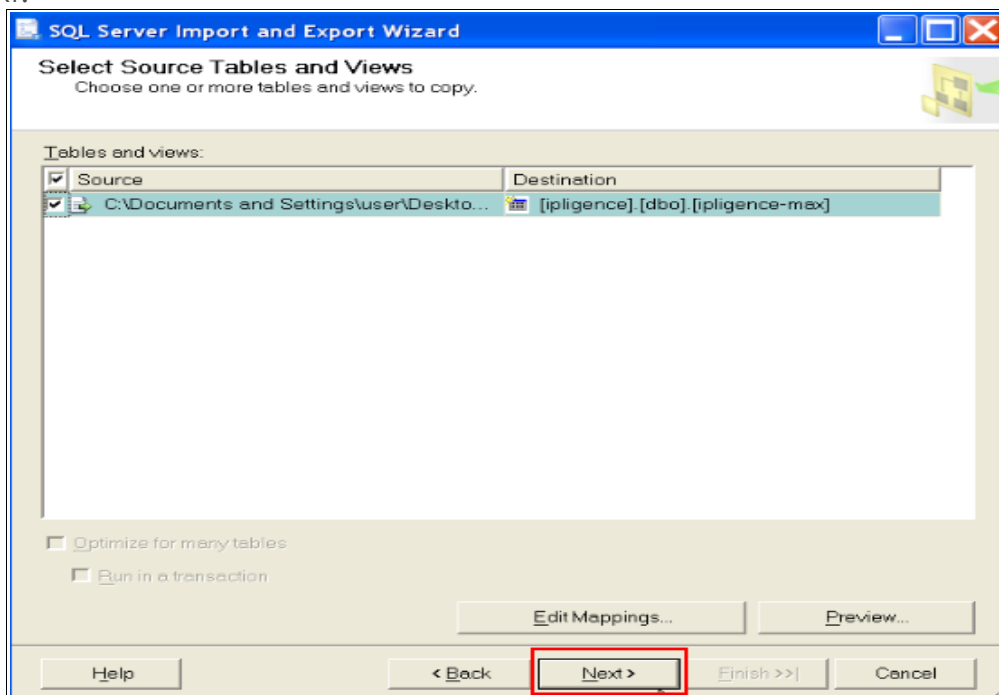
## Step 10

Press Next.



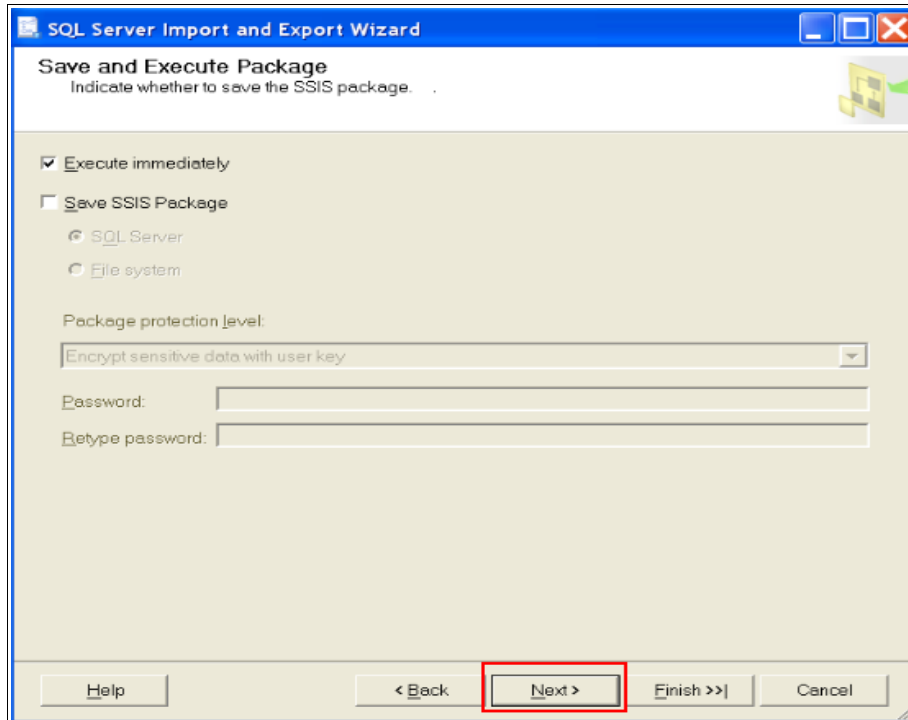
## Step 11

Press Next.



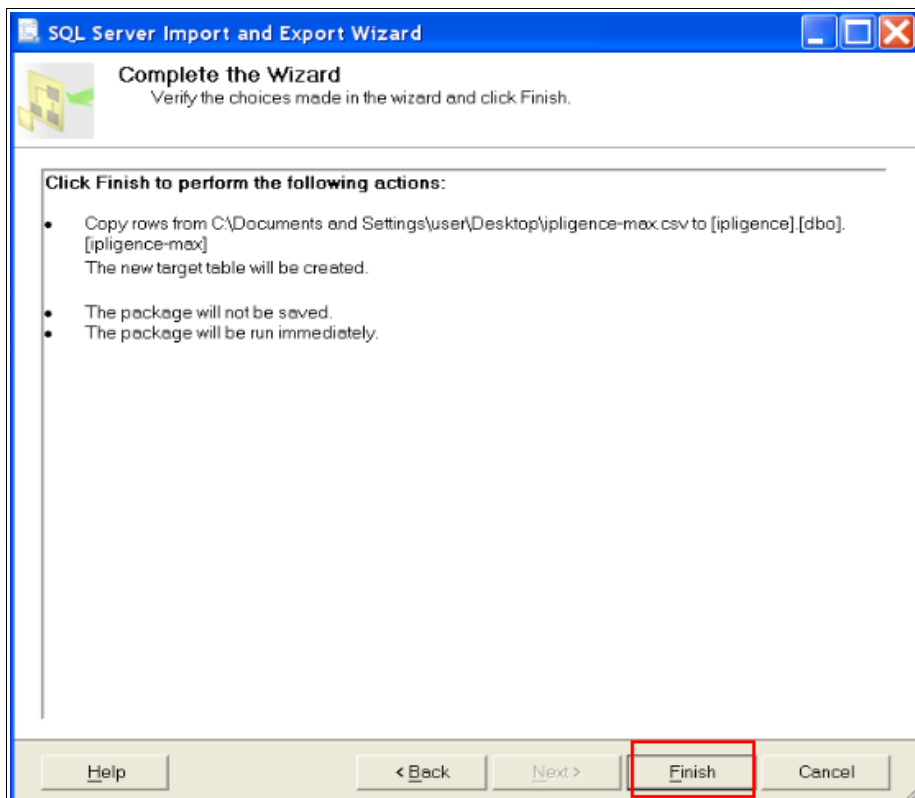
## Step 12

Press next.



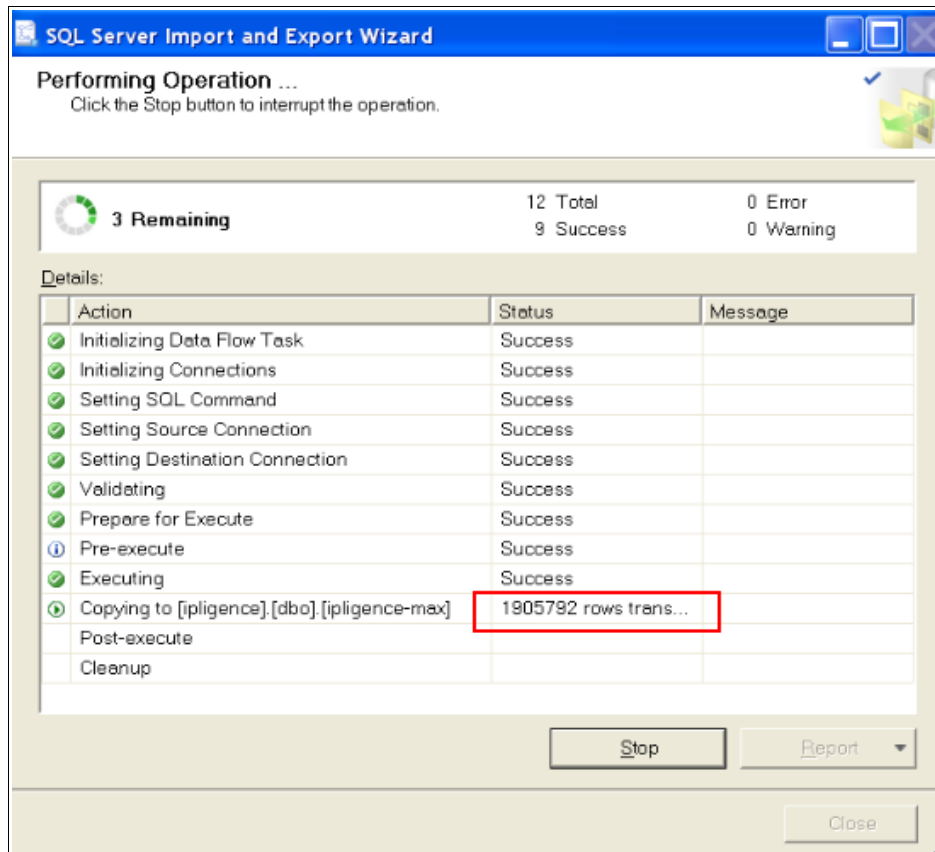
## Step 13

Press Next.

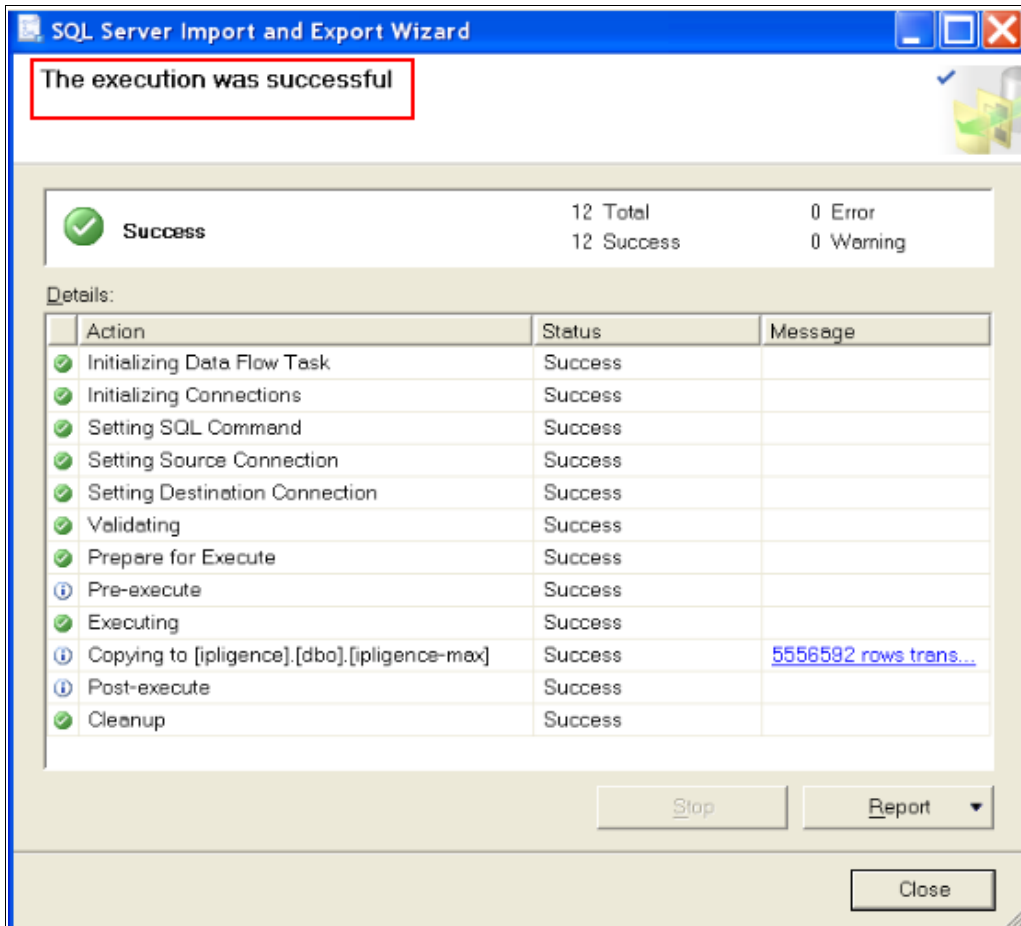


## Step 14

If everything goes well and there are not mistakes in any of the previous steps, the import process should start running. Please allow the necessary time for the import process to finish.



After the process finishes successfully you should read something like this.



**Congratulations**, you have successfully deployed IPLigence inside your database.

You can find an electronic copy of this document at the following address:  
<http://www.ipligence.com/>